

Hydraulic Cutter Units are designed for remote cutting operations with double acting cylinders and a concaved edged single blade cutting system to ensure a clean and full cut of the finest and toughest:

- **Wire / Rope / Cable / Reinforcing Bar and Tube**

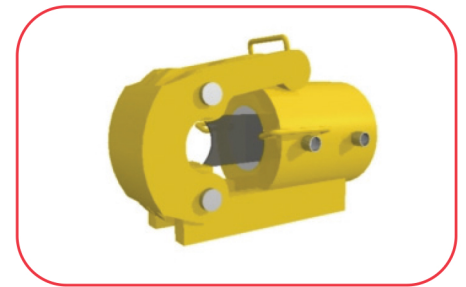
The cutting equipment is designed with a built in 4:1 safety factor and a maximum working pressure of 10,000 PSI. They are manufactured, inspected and tested in accordance with the relevant requirements of the recognised technical standards: EN -ISO - Hydraulic fluid power for safety requirements of systems / components. EN - ISO - Safety of machinery for design/risk assesment/risk reduction and are certified accordingly. They conform with the relevant essential health and safety requirements as laid down in the machinery directive, pressure equipment directive and are CE marked accordingly.

The cutting equipment has a proven track record within:

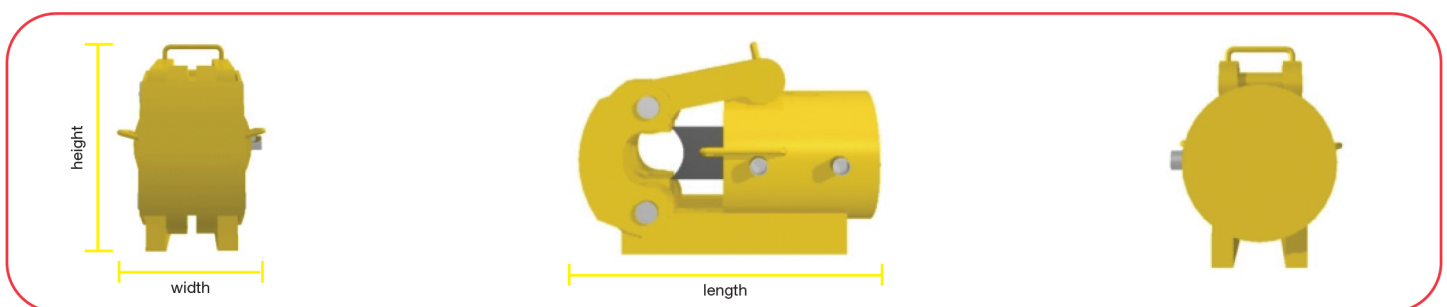
- **Manufacturing / Mining / Recycling / Construction and Demolition**
- **Offshore Sub-sea Engineering / Oil / Gas production, exploration and decommissioning**
- **Nuclear Power Generation and Decommissioning**

Hydraulic Cutter Units are high performance, reliable and robust production equipment, and offer a no nonsense ready to operate production package when combined with the **ENERPAC** or **HI-FORCE** range of products, to give the ultimate cutting package.

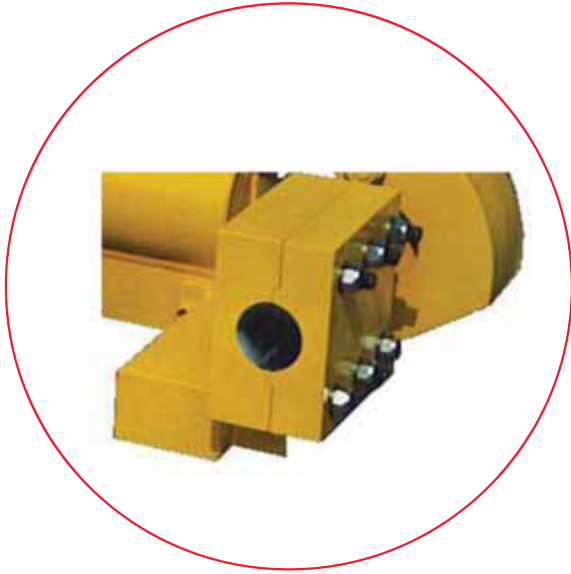
- **Smooth guillotine action reduces risk of jamming**
- **Minimum operator effort when using powered pump**
- **Double acting operation**
- **Safe and easy to operate**
- **All models cut a wide variety of materials**
- **No set up time required**
- **All models fitted with high flow couplers**
- **Easily replaceable blades**
- **Cutter suitable for remote operation**
- **Manufactured in UK**



Selection Chart					
Model No.	Output (Tons)	Weight (Kgs)	Length (mm)	Width (mm)	Height (mm)
HCU 38	36	30	400	155	270
HCU 63	80	70	450	200	390
HCU 90	80	80	515	200	390
HCU 114	120	140	570	280	445



Cutting Performance				
Model No.	Maximum Cutting Capacity (mm)			
	Wire Rope	Cable	Reinforcing bar	Tube
HCU 38	38	38	20	38
HCU 63	63	63	32	63
HCU 90	90	90	32	90
HCU 114	114	114	40	114



Wire Rope/Cable Clamp

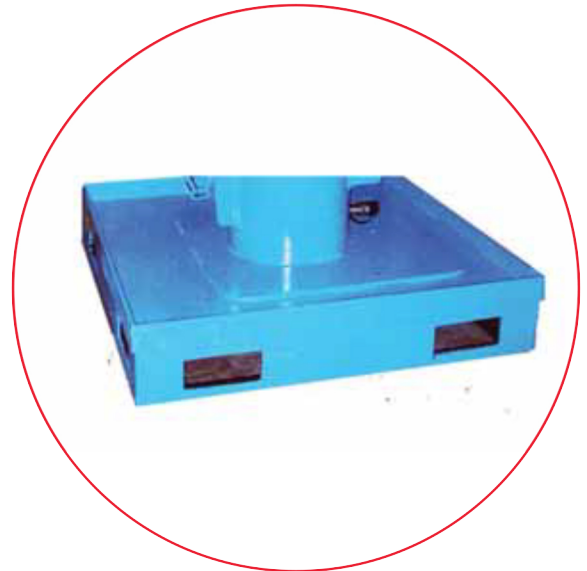
The wire rope / cable clamp is designed so the hydraulic cutter can be fixed at pre-determined position on surface to seabed wire ropes and cables.

- Used for making an Emergency disconnect or release
- Hydraulic cutter safely retrieved after cutting operation
- Multi-adjustable to fit various diameter wire ropes / cables
- Increased operational safety of the hydraulic cutter

Mobile Vertical Mounting Frame

The mobile vertical mounting frame is designed so the hydraulic cutter is fixed safely in a vertical cutting position.

- Safely transported to and from the work area
- Increased operational safety of the hydraulic cutter
- Manufactured to suit your working height requirement
- Fast operational set up time



Roller Guide Assembly

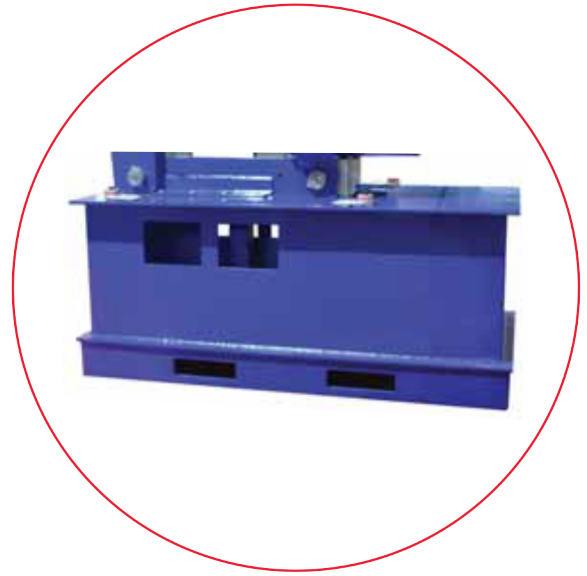
The roller guide assembly is designed to safely position the material to be cut into the hydraulic cutter.

- Prevents damage to the wire rope/ cable and cutting blades
- Faster operational set up time
- Guides material at multiple angles
- Increased operational safety of the hydraulic cutter

Mobile Horizontal Mounting Frame

The mobile horizontal mounting frame is designed so the hydraulic cutter is fixed safely in a horizontal cutting position.

- Fast operational set up time
- Manufactured to suit your working height requirement
- Increased operational safety of hydraulic cutter
- Safely transported to and from the work area



Fixed Latch Assembly

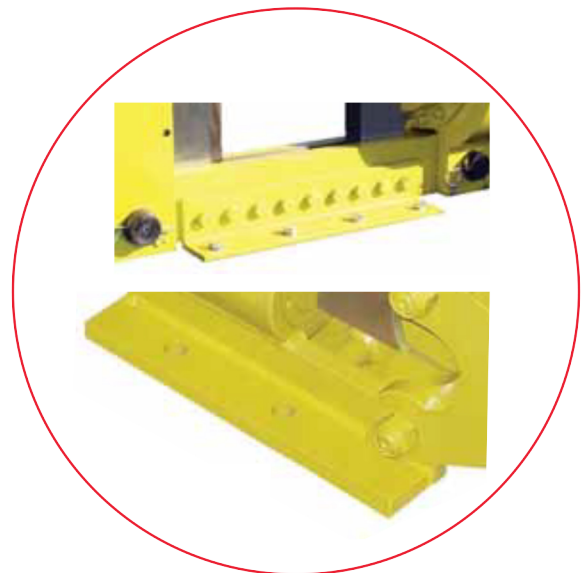
The fixed latch assembly is designed so the hydraulic cutter can be operated without opening accidentally.

- Increased operational safety of the hydraulic cutter
- Can be operated in any position
- Fast set up time maintained
- Recommended for remote cutting applications

Fabricated or Bolted Mounting Bracket

The fabricated or bolted mounting bracket is designed so the hydraulic cutter can be fixed safely to a flat surface.

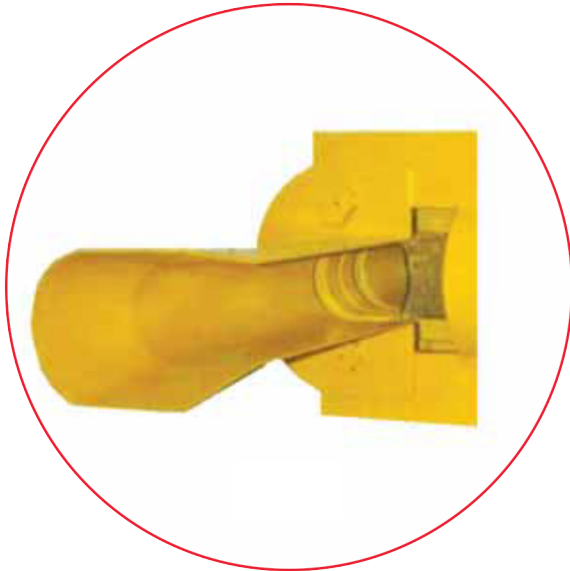
- For vertically or horizontally mounting the hydraulic cutter
- Manufactured to suit your fixing requirement
- Increased operational safety of the hydraulic cutter



Specialised Seal Kits

The specialised seal kits are designed to offer a solution to hydraulic cutting applications which requires a non-standard set up.

- HPU seals for applications with water based hydraulic fluids which are recommended for all Offshore Industry environments
- Increased operational safety of the hydraulic cutter
- FPM / FKM seals for high temperature applications which are recommended for all Nuclear Industry environments



Fabricated Guide Assembly

The fabricated guide assembly is designed so the hydraulic cutter can be lowered along a cable or wire rope.

- Increased guidance stability
- Increased operational safety of the hydraulic cutter
- Manufactured to your requirements
- Recommended for remote subsea applications

Multi-rotational Bracket

The multi-rotational bracket is designed so the hydraulic cutter can be operated while being suspended.

- Increased operational safety of the hydraulic cutter
- Can be operated in any position
- One person operation with dual handed safety control switches
- Recommended for production line applications

