

**GENSCO**

**MINO**



## **MINO SERIES**

**Two shaft shredding system**

## Features

When continuously shredding quantities and volumes or when pre-shredding is required for further procedure. Genox Mino shredder with strong rotor-shearing cutting principle is the best choice. The material is sized by the hooks of the blades, pulled in and cut between the blades of the two opposed shafts. The two strong cutting rotors master all materials, even if difficult to shred or large and voluminous.

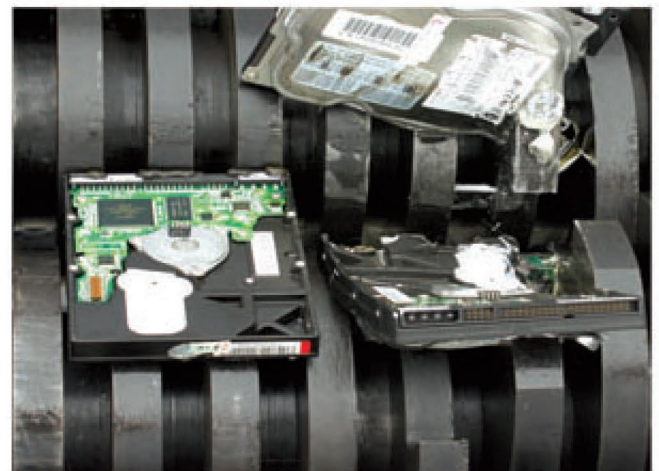
- Low power consumption
- Low noise and dust generation
- Less and easy maintenance
- Sidewalls and seals prevent the fines, dirt and dust from coming into the bearings and gearboxes
- Two pieces chamber for easy access
- Auto reverse system for overload protection

The **Mino-N series** shredders are designed for shredding abrasive and aggressive material especially the material contains lots of sands. The rotor blades are easy to remove from the side opposite to the drive without taking out the shaft. The blade lock system is able to tighten the blades after long period of shredding when the blades are worn.



**M1200-N**

## Applications



**M300 shredding hard discs**

Typical applications:

- Aluminum profiles
- Plastic drums
- Electrical equipment
- Electronic scrap
- Tires and rubber
- Paper waste
- Wooden pallets
- Demolition timber
- etc.

## Blade Type



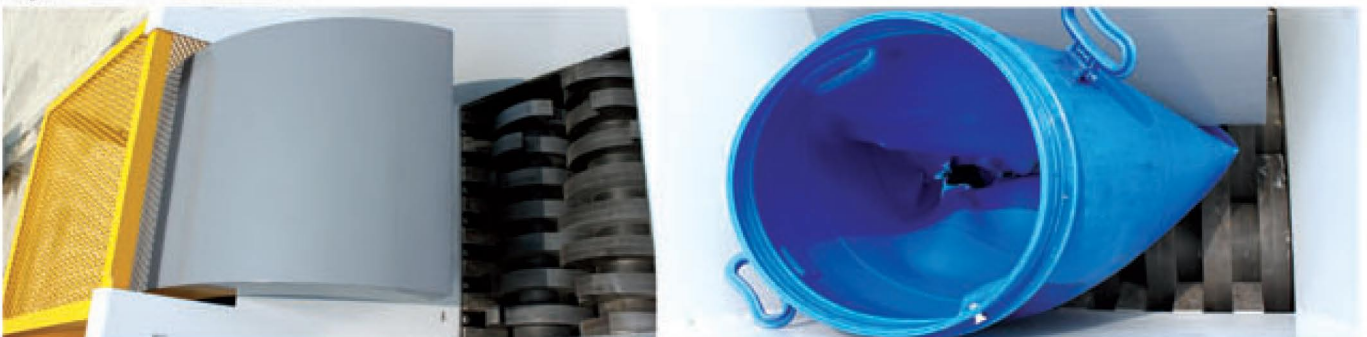
The cutting action and result depends on the blade thickness and number of hooks. The blades thickness controls the width of the fraction; the number of hooks controls the length. The above two factors determine the cutting torque as well, so a proper selection of the blade type is very important for shredding different types of material.

## Rotary Screen

The fractions from the two shaft shredder is normally irregular even equipped with thin and multi-hooks blades. To better control the desired size, a round screen around the cutting chamber is a perfect solution. The rotary screen runs at low speed, the oversized fractions are taken back to the cutting chamber for another pass of shredding.



## Hydraulic Crammer



In order to shred very large volume but hollow material like drums by small to medium shredders become possible. The hydraulic crammer mounted on the hopper presses the material to the center of the chamber so the two rotors can cut the large volume material easily. To press the material also helps the throughput and performance of the shredders.

## Technical data Mino two shaft shredders



Data \ Model	M300	M400	M600	M800
Dimension (L/W/H) (mm)	1450 X 1060 X 1750	1590 X 1060 X 1850	2560 X 1060 X 1850	2820 X 1060 X 1850
Chamber size (mm)	300 X 470	400 X 470	600 X 480	800 X 480
Discharge height (mm)	600	600	650	650
Rotation diameter (mm)	Φ284	Φ284	Φ284	Φ284
Rotation speed (rpm)	17	17	15	14
Number of blades (pcs)	15	20	30	40
Blades thickness (mm)	20	20	20	20
Drive power (Kw)	7.5	7.5	5.5+5.5	7.5+7.5
Hopper volume (L)	480	550	650	750
Weight (Kg)	Approx 1300	Approx 1500	Approx 2200	Approx 2500

Data \ Model	M800T	M1000	M1200
Dimension (L/W/H) (mm)	2930 X 1850 X 2200	3130 X 1850 X 2200	3330 X 1850 X 2200
Chamber size (mm)	800 X 750	1000 X 750	1200 X 750
Discharge height (mm)	850	850	850
Rotation diameter (mm)	Φ430	Φ430	Φ430
Rotation speed (rpm)	14.5	14.5	14.5
Number of blades (pcs)	20	25	30
Blades thickness (mm)	40	40	40
Drive power (Kw)	15+15	18.5+18.5	22+22
Hopper volume (L)	950	1130	1360
Weight (Kg)	Approx 4300	Approx 5200	Approx 6400

Subject to technical changes without notice

Since 1919

**GENSCO**

GENSCO AMERICA, INC

5307 Dividend Dr., Decatur, Georgia 30035 • Tel: 770 808-8711 • Fax: 770 808-8739

GENSCO EQUIPMENT (1990) Inc

53 Carlaw Ave., Toronto, Canada M4M 2R6 • Tel: 416 465-7521 • Fax: 416 465-4489

email: info@genscoequip.com • www.genscoequip.com



**ACROSS USA 800 268-6797**