

HYDRAULIC CHAIN CUTTERS



- Maximum working pressure 700 bar.
- CK0016 model includes an integral hand pump. Other models are powered by an external hand, air, electric, or petrol pump.
- CK0216, CK0230 and CK0250 models are double acting, for fast retraction.
- All models are provided with a male ball quick coupler AZ3321.
- Available battery powered portable pump HAB1101.



Air Hydraulic Pump
Z12107.

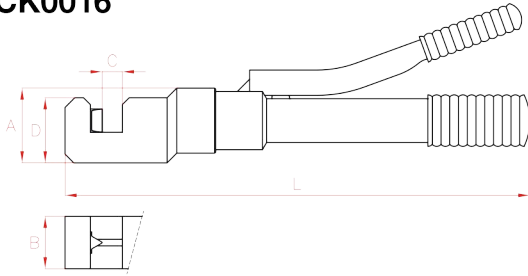


Battery Powered Portable
Hydraulic Pump HAB1101.

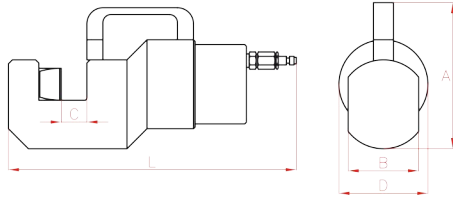


Manual
Powerpack, HAM.

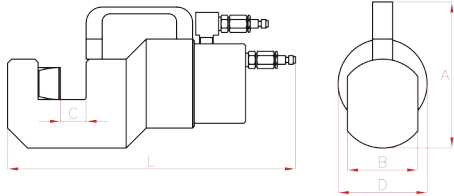
CK0016



CK0116 - CK0130



CK0216 - CK0230 - CK0250



HYDRAULIC CHAIN CUTTERS

CK

13-112 Tn

∅ 0-50 mm

700 bar

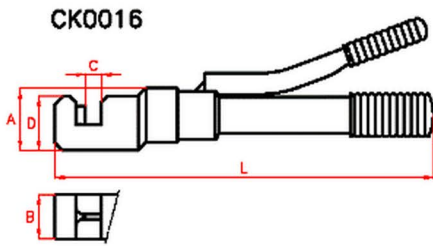
TOOLS

Model	Replacement Blades	
	Mobile	Fixed
CK0016	CRK16/1	CRK16/2
CK0116	CRK16/1	CRK16/2
CK0130	CRK30/1	CRK30/2
CK0216	CRK16/1	CRK16/2
CK0230	CRK30/1	CRK30/2
CK0250	CRK50/1	CRK50/2

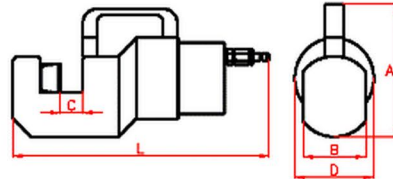
* maximum ∅

Model	Capacity	Oil Cap.	Weight	A	B	C	D	L	Chain*	Strenght	Standards	Bar*	Strenght
LARZEP	kN	cm ³	kg	mm	mm	mm	mm	mm	mm	by grades		mm	N/mm ²
CK0016	135	-	5,8	81,5	54	20	68	489	19	28 - 43 - 50	ASTM - 413	19	700
											DIN 5684	15	1.000
CK0116	135	38	4,8	81,5	54	19,5	68	290	14	60 - 80	DIN 5685	13	1.400
											DIN 764	11	1.600
CK0130	390	182	16,8	183	88	31,5	113	360	30	28 - 43 - 50	ASTM - 413	30	700
											DIN 5684	25	1.000
CK0216	135	38	8,4	126	54	19,5	81	343	20	60 - 80	DIN 766	20	1.400
											DIN 762	17	1.600
CK0230	345	161	16,0	183	88	30	113	412	19	28 - 43 - 50	ASTM - 413	19	700
											DIN 5684	15	1.000
CK0250	1.120	842	68,0	228	120	52	207	475	14	60 - 80	DIN 5685	13	1.400
											DIN 764	11	1.600
CK0250	1.120	842	68,0	228	120	52	207	475	30	28 - 43 - 50	ASTM - 413	30	700
											DIN 5684	25	1.000
CK0250	1.120	842	68,0	228	120	52	207	475	20	60 - 80	DIN 766	20	1.400
											DIN 762	17	1.600
CK0250	1.120	842	68,0	228	120	52	207	475	50	28 - 43 - 50	DIN 5684	50	700
												45	1.000
CK0250	1.120	842	68,0	228	120	52	207	475	40	60 - 80	DIN 685	40	1.400
												35	1.600

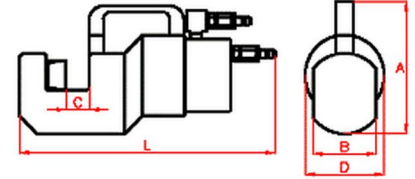
CK Hydraulic chain cutters



CK0116 – CK0130



CK0216 – CK0230 – CK0250



Model	Capacity	Oil Capacity	Weight	A	B	C	D	L	Chain	Strenght	Standards	Bar		Model	Replacement Blades	
												Ø max.mm	N/mm ²		LARZEP	Mobile
CK0016	135	-	5,8	81,5	54	20	68	489	19	28 - 43 - 50	ASTM - 413 DIN 5684	19	700	CK0016	CRK16/1	CRK16/2
									14	60 - 80	DIN 5685 DIN 764	13	1.400			
CK0116	135	37,3	4,8	81,5	54	19,5	68	290	19	28 - 43 - 50	ASTM - 413 DIN 5684	19	700	CK0116	CRK16/1	CRK16/2
									14	60 - 80	DIN 5685 DIN 764	13	1.400			
CK0130	390	181,6	16,8	183	88	31,5	113	360	30	28 - 43 - 50	ASTM - 413 DIN 5684	30	700	CK0130	CRK30/1	CRK30/2
									20	60 - 80	DIN 766 DIN 762	25	1.000			
CK0216	135	38	8,4	126	54	19,5	81	343	19	28 - 43 - 50	ASTM - 413 DIN 5684	19	700	CK0216	CRK16/1	CRK16/2
									14	60 - 80	DIN 5685 DIN 764	15	1.000			
CK0230	345	160,8	16	183	88	30	113	412	30	28 - 43 - 50	ASTM - 413 DIN 5684	30	700	CK0230	CRK30/1	CRK30/2
									20	60 - 80	DIN 766 DIN 762	25	1.000			
CK0250	1.120	842	68,0	228	120	52	207	475	50	28 - 43 - 50	DIN 5684	50	700	CK0250	CRK50/1	CRK50/2
									45	1.000	40	1.400				
									40	60 - 80	DIN 685	40	1.400			