

Zato

Scrap Processing Solutions



Two shaft shredder
Preshredder

BLUE DEVIL

FAST POWERFUL PROFITABLE



www.genscoequip.com

MORE VALUE FOR YOUR SCRAP



CLOUD REMOTE
MONITOR



SCRAP
YARDS



STEEL MILLS



CAR
DISMANTLERS



FOUNDRIES



CAR
MANUFACTURERS

DESIGNED FOR STEEL – BUILT TO HANDLE STEEL

INCREASED DENSITY, UPGRADE MATERIAL, QUICKLY & EFFICIENTLY

Equipped with state-of-the-art systems resulting from years of research and development in new technology, the Blue Devil is unlike anything on the market. These machines are extremely strong, safe and quiet, and are designed and built specifically for the volumetric reduction of steel. All systems can be supplied with optional downstream sorting equipment for the separation of ferrous and non-ferrous material.

Designed to process the following materials:

- Bulk and/or **baled** mixed scrap from collection;
- White goods like fridges, stoves, washing machines...;
- Cars, bulk and/or crushed (with motors and engines);
- Trimmings from rolling mills and industrial scrap;
- Sheet metal;
- Reinforcing bar;
- Flame cut steel and skeletons;
- Cast aluminum;
- Car, Truck and tractor tires;
- Propane tanks and fuel tanks;

As opposed to bulky scrap including bales and crushed

cars, shredded scrap from the Blue Devil can be inspected for foreign or dangerous material prior to shipping, handled and processed faster, and shred exceptionally small. Furthermore, the controlled size of clean loose shred from the Blue Devil, can have a high density allowing increased throughput and decreased melting costs when further processing is not required.

EFFICIENT & STRONG WORKHORSE

Materials destined for a hammermill shredder like aluminum and steel bales, white goods, crushed cars and bulk scrap metal, are subjected to rough shearing, so that once introduced into a hammermill, the shredder works effortlessly, increasing the shredders hourly production rate (by about 30-40%). In addition, pre-shredding this material also protects the hammers, mill chamber, bearings and shafts, as an initial screening of the material occurs: the risk of introducing material that is dangerous or should not be shred by the hammermill can be eliminated by the safety mechanisms of the Blue Devil. Overall wear and tear on all components are significantly reduced.



ROTATING CUTTING SHAFTS

The two rotating shafts contain large, keyed in place, cutting blades, bolted and locked in place. The Blue Devils special keyed shaft is designed to perform with high efficiency under immense loads. The blades are manufactured from the world's highest quality tool steel. Produced from specific high heat and abrasion resistant material which increases their lifespan. The design and geometry of the blade and cutting system has been engineered in order to maintain a perfect intersection between the two shafts. The blade size can be customized according to the type of scrap to be processed. The blades are designed to increase performance and protect the machine from excessive stress and wear, thus granting a superior lifespan. Blades are offered with these dimensions: 150mm (6"), 200mm (8") and 300mm (12").



CONTAINER

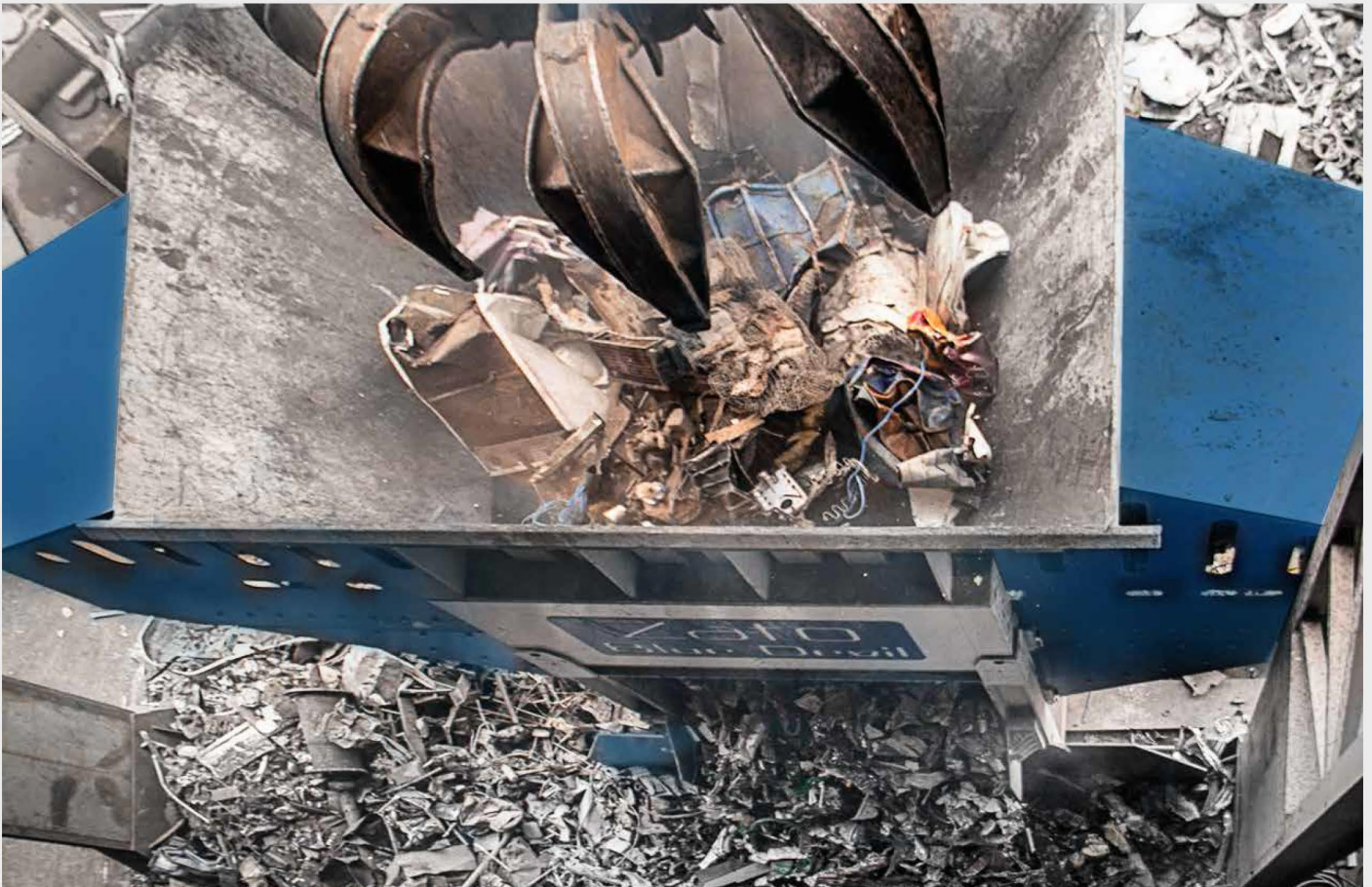
Fully enclosed container contains: Diesel Engine (Electric Motor), Hydraulic Unit, Hydraulic Pump, PLC Control Panel with CPU. The container is resistant to any weather conditions and is completely sound proof. Manufactured with galvanized steel panels, high density mineral fiber insulation, reinforced floor, and completely fire resistant REI 120. Noise level: 70 dB at a distance of 7mt or 23 feet. Service door with panic exit bar, main entry door. Internal lighting.



CONTAINER 40" mm. 12.120 X 2.450 X 2800 (MOTORE ELETTRICO CON INVERTER).

MOTOR ENGINE & POWER SUPPLY

All models can be driven by diesel or electrical motors.



SAFETY AND COMMAND SYSTEM

Each Blue Devil is equipped with integrated safety devices built into the control system. The system is equipped to notify the operator and limit any potential damage to the machine. If or when any object that cannot be shred enters the cutting chamber, the PLC instructs the shaft to attempt 3 inversions. An emergency signal alerts the operator with an alarm sound and flashing light to remove these objects or scrap from the shredder. All models are offered with an Internet remote survey system. The remote survey can command and control the shredder in addition to providing

diagnostics on operation. The Internet remote survey is specifically designed to control any plant from a remote site, thus allowing ZATO to identify any problem with the machine and assist in correcting the problem in a timely manner.



BLUE DEVIL

GF1500

GF4000

GF5000

GF6000

| | | | | | |
|---|-----------|-------|-------|---------------|-----------------|
| Main Body | Tonn. | 36 | 42 | 51 | 60 |
| Feeding hopper | Tonn. | 4,6 | 5 | 3,9 | 5,2 |
| Supporting structure | Tonn. | 7 | 7 | 10+6 [Carter] | 11+6,7 [Carter] |
| Hopper capacity | m3 | 7 | 7 | 8 | 12 |
| Shafts | Nr. | 2 | 2 | 2 | 2 |
| Blades 150 mm. | Nr. | 84 | 84 | - | - |
| Blades 160 mm. | Nr. | - | - | 84 | - |
| Blades 200 mm. | Nr. | 60 | 60 | - | 60 |
| Blades 300 mm. | Nr. | - | 84 | - | - |
| Safety inversions | Nr. | 3 | 3 | 3 | 3 |
| Engine power | cv | 571 | 672 | 639,2 | 789 |
| Engine power | kW | 420 | 494 | 470 | 580 |
| Engine speed | Giri/min. | 1800 | 1800 | 1480 | 1480 |
| Hourly production* | | | | | |
| *Mixed collection scrap and cars, baled and bulk, flame cut steel | Tonn/ora | 15/25 | 20/25 | 20/40 | 30/50** |
| **Hourly production Aluminum: slag, bales, sheets | Tonn/ora | 5/10 | - | - | 15/20 |

Rev. 2014

Technical specifications are subject to change without notice

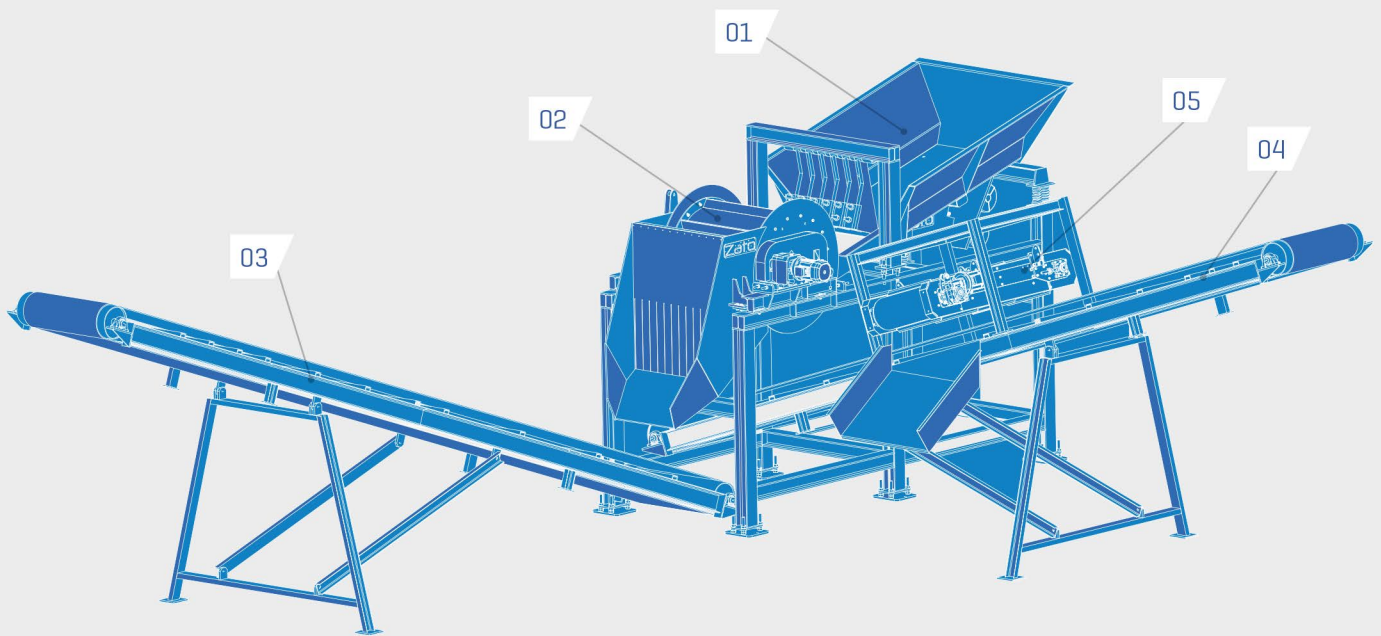




MAGNETIC SEPARATION LINE

Material processed with a Blue Devil can be cleaned with an optional magnetic separation line. This system, placed after a Blue Devil two-shaft shredder allows the recovery of non-ferrous metals present in a mixed collection of scrap. This increases the possibility of upgrading scrap metal. The system is composed of: Vibrating plant (01),

Magnetic Drum (02), Conveyor Belt for Steel (03), Conveyor belt for non-ferrous and other waste, (04), Over-belt magnet (05) on the conveyor for steel and further separation of contaminated material.



ZATO S.R.L.

Via Campi Grandi, 23
25080 PREVALLE (BS) - Italy

tel. +39 [0]30 6461899 r.a.

fax +39 [0]30 6801897

BLUE DEVIL



CLOUD REMOTE
MONITOR



SCRAP
YARDS



STEEL MILLS



CAR
DISMANTLERS



FOUNDRIES



CAR
MANUFACTURERS

